

## Product Information

### World Heat Cylinders

#### V-Cyl-V2

#### Pre-Plumbed Heat Pump Cylinders



**WORLD HEAT**  
CYLINDERS



**MADE IN  
MANCHESTER**



**High quality British  
manufactured stainless steel  
domestic hot water solutions  
designed for any application.**

World Heat Cylinders manufacture a full range of unvented pre-plumbed heat pump cylinders specifically for connection to LG Air Source Heat Pump Systems.



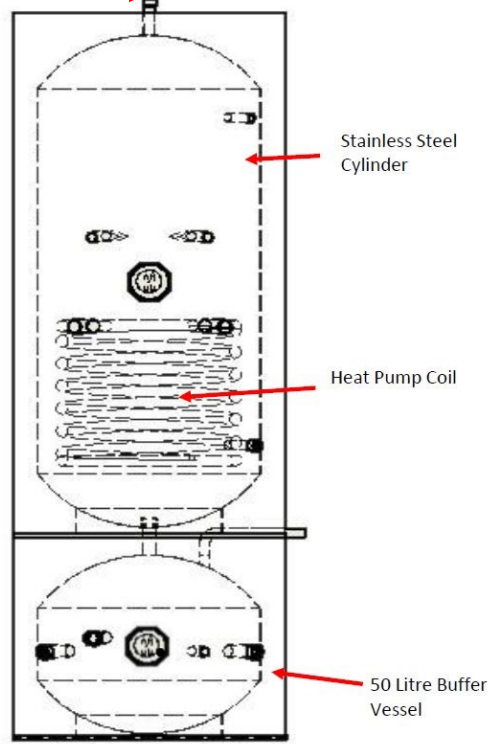
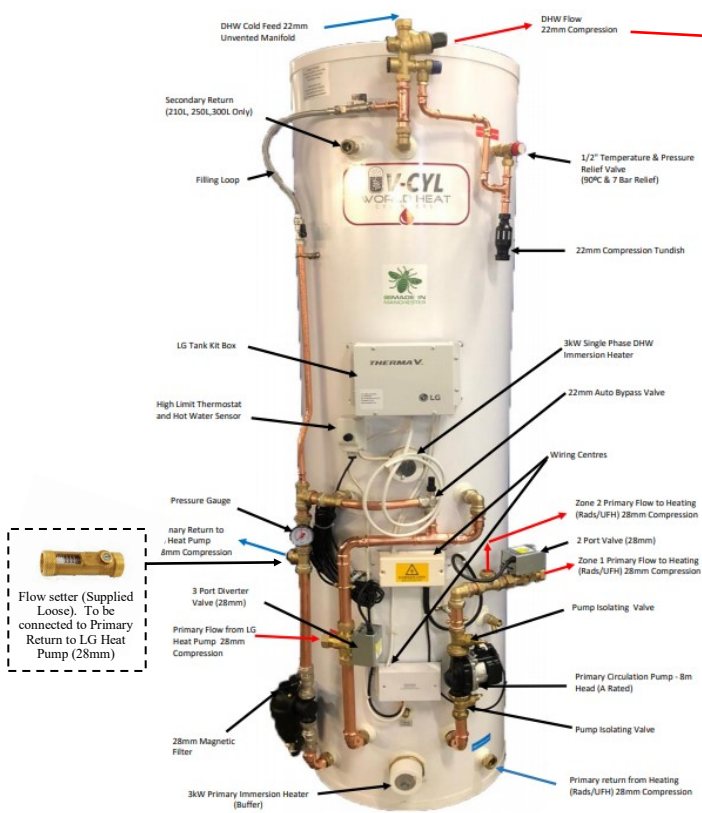
All of our cylinders are manufactured from high quality stainless steel under an ISO9001 certified quality management system in our purpose made manufacturing facility in Manchester.

#### Key Features

- Pre-plumbed for LG Heat Pumps\*
- Integrated 50L Mild Steel Buffer
- Saves Installation Time
- Prevents Installation Faults
- 25 Year Manufacturing Warranty on Stainless Vessel
- 12 Month Manufacturing Warranty on Components
- Highly Insulated (ERP Rated)
- Full System Unvented Kits
- WRAS Approved Product
- ISO9001 Certified Quality Management
- Potable Expansion Vessel & 28mm Flow Setter Supplied Separately
- Primary Pipe Work and Components are all 28mm Compression

World Heat Cylinders  
Unit 4  
Tudor Industrial Estate  
Ashton Street  
Dukinfield  
Cheshire  
SK16 4RN

Tel: 0161 343 8610  
Fax: 0161 343 5585  
Email: [sales@whcylinders.co.uk](mailto:sales@whcylinders.co.uk)



All pictures shown are for illustration purpose only. Actual product may vary due to product enhancement

WH Model Reference		150VCYLPP	180VCYLPP	210VCYLPP	250VCYLPP	300VCYLPP
<b>Nominal Capacity (Litres)</b>		<b>150</b>	<b>180</b>	<b>210</b>	<b>250</b>	<b>300</b>
<b>Overall Shipping Dimensions H x W x D (mm)</b>		1725x600x900	2050x600x900	1920x600x900	2220x600x900	2125x1200x1200
<b>Overall Cylinder Dimensions H x W x D (mm)</b>		1505x550x600	1630x550x600	1820x550x600	2020x550x600	2020x600x650
<b>Weights (kg)</b>	<b>Empty</b>	65.5	69.5	75	81	88
	<b>Full</b>	215.5	249.5	285	331	388
	<b>Packaged</b>	77	81	86	92	99
<b>Unvented Expansion Vessel</b>	<b>Nominal Volume</b>	12L	19L	19L	19L	24L
	<b>Charge Pressure</b>	3.0 Bar				
<b>Control &amp; Relief Valve Pressure Settings</b>	<b>Mains Inlet Pressure Regulator</b>	3.0 Bar				
	<b>Expansion Relief Valve (Cold)</b>	6.0 Bar				
	<b>T&amp;P Relief Valve</b>	7.0 Bar & 90°C				
<b>Control &amp; Overheat Safety Thermostat Temperature Settings</b>	<b>DHW Control Stat ON/OFF</b>	LG RS3 Controller				
	<b>High Limit Stat</b>	Mechanical 90°C				
	<b>Voltage</b>	230 - 240 V				
	<b>Electronic Immersion Timer</b>	LG RS3 Controller & LG Tank Kit				
<b>Cylinder Material</b>		Duplex Stainless Steel (25 year manufacturing warranty)				
<b>DHW Immersion Heater Duty</b>		3kW (13 Amps 230v ac)				
<b>Primary (Buffer) Immersion Heater Duty</b>		3kW (13 Amps 230v ac)				
<b>Heating Surface Area</b>		2m <sup>2</sup>	2m <sup>2</sup>	3m <sup>2</sup>	3m <sup>2</sup>	3m <sup>2</sup>
<b>Insulation Type</b>		Polyurethane (PU) Insulation with CO2 Blowing Agent				
<b>Insulation Thickness</b>		50mm				
<b>System Circulating Pump</b>		Grundfos UPM3—8m Head—A Rated				
<b>Central Heating Zone Valve</b>		Honeywell 28mm, 2 port (1 No.)				
<b>Domestic Hot Water Zone Valve</b>		Honeywell 28mm, 3 port Diverter (1 No.)				
<b>Central Heating Controller</b>		3rd party controls				
<b>Hot Water Controller</b>		LG RS3 Controller				
<b>Magnetic Filter</b>		28mm Magnetic Filter				
<b>Flow Setter Valve</b>		28mm Inline Flow Setter (Supplied Separately)				
<b>Primary Pressure Drop of Cylinder Pipe Work</b>		16kPa @ 17 Litres per minute				
<b>Re-Heat Time</b>		35—45 Minutes				
<b>Standing Heat Loss (W)</b>		64.58	69.3	78.9	90.4	92.6
<b>ERP Rating</b>		B	B	B	B	B
<b>GWP of Insulation</b>		0	0	0	0	0
<b>ODP of Insulation</b>		Less than 5	Less than 5	Less than 5	Less than 5	Less than 5

Solar Twin Coil units available on request  
Bespoke cylinders available on request

